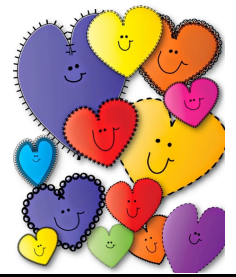




February 2019



Mon	Tue	Wed	Thu	Fri
<p>Lunches include a meat or meat alternative Entrée, choice of 1% white milk or non-fat chocolate milk, a whole Grain bread or a Grain item and unlimited fruits and vegetables.</p> <p>Menu subject to change</p>	<p>We are an Offer Versus Serve program. "Offer vs. Serve" means that you are always offered a full lunch, but if you don't want it all you don't have to take every item that is offered. Students must choose from at least 3 food groups and must choose at least a 1/2 of a cup of fruit or vegetables</p>	<p>Lunch Prices: \$3.00 per lunch \$60 for 20 lunches Milk .40 each</p>		<p>1. NO SCHOOL—Teacher Faith Formation</p>
<p>4. Main Entrée: Mac & Cheese Sides: Salad Bar</p>	<p>5. Main Entrée: Cheese Burger & Potato Wedges Sides: Salad Bar</p>	<p>6. Main Entrée: Chili & Cinnamon Roll Sides: Salad Bar</p>	<p>7. Main Entrée: Chicken Sandwich & Fries Sides: Salad Bar</p>	<p>8. Main Entrée: Cheese Pizza Sides: Salad Bar</p>
<p>11. Main Entrée: Chicken Nuggets & Roll Sides: Salad Bar</p>	<p>12. Main Entrée: Grilled Cheese Sandwich & Tomato Soup Sides: Salad Bar</p>	<p>13. Main Entrée: Corn Dog & Potato Wedges Sides: Salad Bar</p>	<p>14. Main Entrée: BBQ Pork Sandwich Sides: Salad Bar</p> <p style="text-align: center;"><i>Happy Valentine's Day</i></p> 	<p>15. Main Entrée: Pepperoni Pizza Sides: Salad Bar</p>
<p>18. NO SCHOOL</p>  <p>★ Presidents' Day ★</p>	<p>19. NO SCHOOL</p> <p>Teacher In-service Day</p>	<p>20. Main Entrée: Turkey & Cheese Sandwiches & Chicken Noodle Soup Sides: Salad Bar</p>	<p>21. Main Entrée: Lasagna & Garlic Bread Sides: Salad Bar</p>	<p>22. Main Entrée: Cheese Pizza Sides: Salad Bar</p>
<p>25. Main Entrée: Sweet and Sour Chicken & Rice Sides: Salad Bar</p>	<p>26. Main Entrée: Hot Dog & Potato Wedges Sides: Salad Bar</p>	<p>27. Main Entrée: Meatball Sub & Fries Sides: Salad Bar</p>	<p>28. Main Entrée: Bean & Cheese Burrito Sides: Salad Bar</p>	